

The Peat Fire Flame

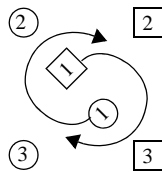
(Scotland)

Music: "The Peat Fire Flame" 2/4 meter
 Formation: 4-cpl longways set, 3 cpls active.
 Steps: Skip Change of Step, Reel of 4.

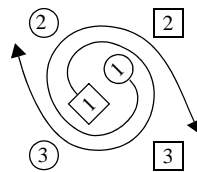
Bars Pattern

Chord INTRODUCTION. Bows and curtseys.

- 1-6 1st cpl cast off 1 place (2nd cpl step up), then dance half a Figure of 8 around 2nd cpl, finishing in 2nd place on the wrong side.
- 7-8 1st cpl turn with L hands to face 1st corners.
- 9-12 1st cpl turn 1st corners with R hands, then pass each other by R shldr to face 1st corners again.
- 13-16 1st cpl turn 1st corners with L hands, then pass each other by L shldr to face 1st corners again.
- 17-20 1st cpl dance half a Reel of 4 with 1st corners, then pass each other by L shldr.
- 21-24 Enter half a Reel of 4 with 2nd corners. 1st couple finish facing their 1st corners again, who are now on the wrong side of the dance.
- 25-26 1st cpl Set to 1st corners.
- 27-28 1st cpl dance round each other to the R with 2 Skip Change of Step to finish facing 2nd corners.
- 29-30 1st cpl set to 2nd corners.
- 31-32 1st cpl dance round each other to the R with 2 Skip Change of Step to finish in 2nd place on the wrong side, facing out.



Bars 27-28



Bars 31-32

◻ square = Woman

⊙ circle = Man

- 33-36 2nd and 3rd cpls dance Half Rights and Lefts to bring them back to their own sides in 1st and 3rd laces (omitting the polite turn). Meanwhile, 1st M cast off to below 3rd place on the W's side, then dance up the ctr to meet his ptr. 1st W cast up to above 1st place on M's side, then dance down the ctr to meet her ptr.
- 37-40 1st cpl turn with R hands 1 1/4 times to finish in 2nd place on their own sides, but stay facing out read to cast off to begin the dance again. Meanwhile, 2nd and 3rd cpls turn with R hands.

Repeat with a new top cpl. At the end of the 2nd time through the dance, the original 1st cpl finish facing out, then cast into 4th place at the beg of the next turn as the new 1st cpl cast into 2nd place.

Presented by Jennifer Kelly