

# O' Wha's at the Window

(Scotland)

Music:

6/8 meter

Formation: Jig for longways sets of 5 couples.

Steps: Skip Change of Step, Grand Chain (same as Grand R and L), Balance.

Bars

Pattern

Chord

INTRODUCTION Bows and curtseys.

- 1-10 Reels of 5 at the sides, 1st and 3rd cpls dance down and out to start, 2nd and 4th up and in, 5th up and out. (Fig 1)
- 11-12 1st and 3rd cpls cast off, 2nd and 4th move up.
- 13-16 1st and 3rd cpls dance a half Figure of 8 round the cpls below them. (Fig 2)
- 17-20 1st and 3rd cpls dance a half Figure of 8 round the cpl above them. (Fig 3)
- 21-30 Grand chain for 5 cpls, one step to each hand. (Start as in Fig 4)
- 31-32 1st and 3rd cpls turn R hand.
- 33-34 Balance in line with 1st corners. (Fig 5)
- 35-36 1st and 3rd cpls turn R hand.
- 37-38 Balance in line with 2nd corners. (Fig 6)
- 39-40 1st cpl turn R hand into 3rd place, 4th cpl move up. At the same time 3rd cpl turn R hand into 5th place, 5th cpl move up.

Repeat with new top and 3rd cpls.

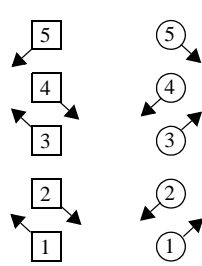


Fig 1

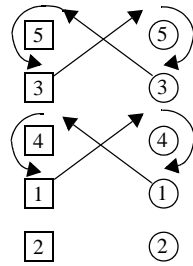


Fig 2

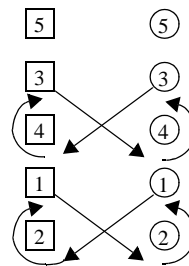


Fig 3

◻ square = Woman  
 ○ circle = Man

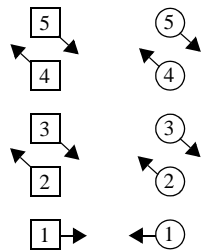


Fig 4

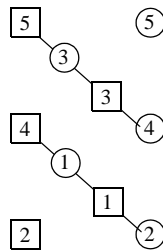


Fig 5

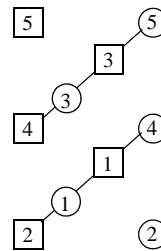


Fig 6

Presented by Jennifer Kelly